



CATALOGUE NO. 1307.1

EMBARGOED UNTIL 11.30 A.M. 31 OCTOBER 1996

**ECONOMIC INDICATORS, NEW SOUTH WALES
OCTOBER 1996**

MAIN FEATURES

EMPLOYMENT	The seasonally adjusted number of employed persons in NSW was 2,791,100 in September 1996, a decrease of 0.3% on the previous month. Nationally, employment fell by 0.4% over the same period.
UNEMPLOYMENT	The seasonally adjusted number of unemployed persons in NSW was 247,100 in September 1996, a fall of 0.3% on the previous month, but 8.3% higher than in September 1995. The seasonally adjusted unemployment rate in September 1996 was 8.1% in NSW and 8.7% nationally.
NEW MOTOR VEHICLE REGISTRATIONS	In seasonally adjusted terms, new motor vehicle registrations in NSW increased by 2.4% from 17,506 in July 1996 to 17,920 in August 1996.
BUILDING APPROVALS	The seasonally adjusted number of new dwelling units approved in NSW in August 1996 was 3,418, a decrease of 18.0% on the previous month, and 5.6% lower than in August 1995.
BUILDING COMMENCEMENTS	The number of new dwelling units commenced in NSW in June Quarter 1996 was 9,883, a decrease of 0.2% on the previous quarter and of 18.8% on June Quarter 1995.
FINANCE	The value of housing finance commitments for owner occupation in NSW in August 1996 fell by 5.5% from July 1996, but rose 22.2% from August 1995.

NOTES

This publication provides information on a wide range of economic indicators which are the latest available at the time of publication. In a number of cases, figures appearing in this summary are preliminary and are subject to revision in subsequent issues.

For detailed explanatory notes and definitions for the items shown in this publication, readers are referred to the specific ABS publications.

Current publications produced by the ABS are listed in the *Catalogue of Publications* (1101.0). A *Release Advice* (1105.0) is issued on Tuesdays and Fridays which lists publications to be released in the next few days. These publications are available from any ABS office.

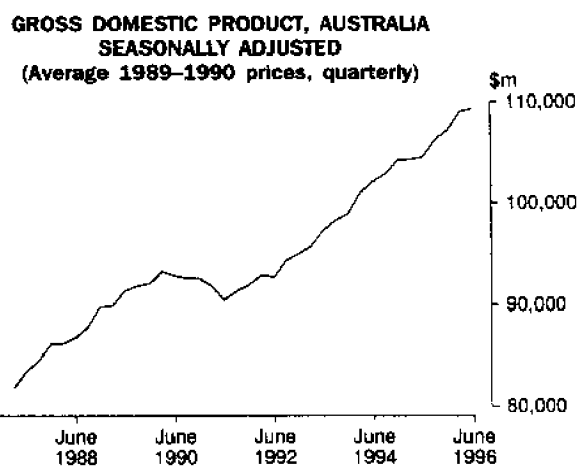
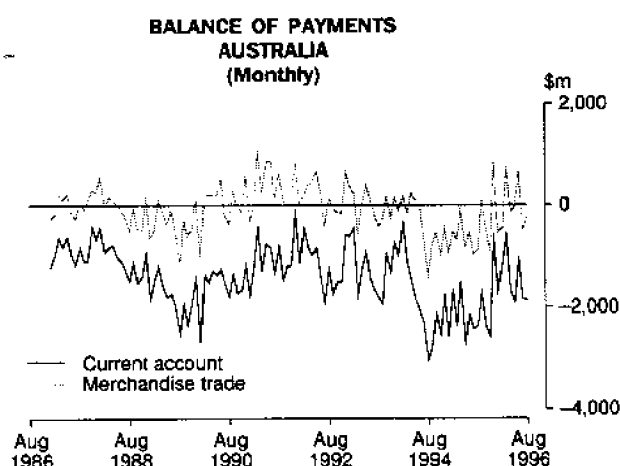
Gregory W. Bray
Regional Director
New South Wales

-
- INQUIRIES:
- for further information about statistics in this publication and the availability of related unpublished statistics, contact Bill Markham on Sydney (02) 9268 4376 or any ABS office.
 - for information about other ABS statistics and services please contact Information Services on Sydney (02) 9268 4611 or any ABS office.
-

1

NATIONAL ECONOMY

Indicator	Unit	Latest period	Change over prior period	Change over year			
National accounts percentage change, average 1989-90 prices, (seasonally adjusted)—							
Gross non-farm product	%	June qtr 96	0.4	3.8			
Gross domestic product	%	June qtr 96	0.3	4.5			
<i>Figures for preceding periods</i>							
Indicator	Unit	Latest period	Latest figure	One period ago	Two periods ago	Three periods ago	Figure one year ago
Balance of payments—							
Merchandise exports	\$m	Aug. 96	6 334	6 480	6 291	6 633	6 078
Merchandise imports	\$m	Aug. 96	-6 566	-6 953	-5 573	-6 669	-6 953
Balance on merchandise trade	\$m	Aug. 96	-232	-473	718	-36	-875
Balance on goods and services	\$m	Aug. 96	-374	-408	582	-225	-1 075
Balance on current account	\$m	Aug. 96	-1 849	-1 845	-1 011	-1 906	-2 361
Balance on current account (seasonally adjusted)	\$m	Aug. 96	-1 330	-1 209	-1 164	-2 061	-1 554
Terms of trade for goods and services—							
Index (seasonally adjusted)	1989-90 = 100	June qtr 96	97.8	95.9	94.0	94.0	93.0
Exchange Rates at end of period—							
\$US/\$A		Aug. 96	0.7909	0.7731	0.7890	0.7983	0.7524
Trade weighted index of value \$A	May 1970 = 100	Aug. 96	57.9	56.5	58.1	58.7	53.9
Indicator Lending Rate—							
Bank loans to large businesses (Source: Reserve Bank)	%	Sept. 96	10.25	10.40	10.80	10.80	10.70

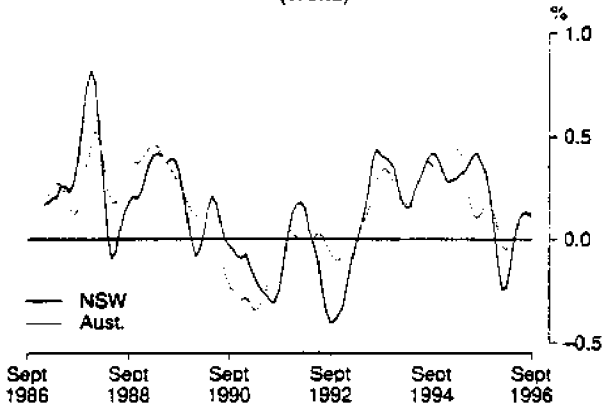


2

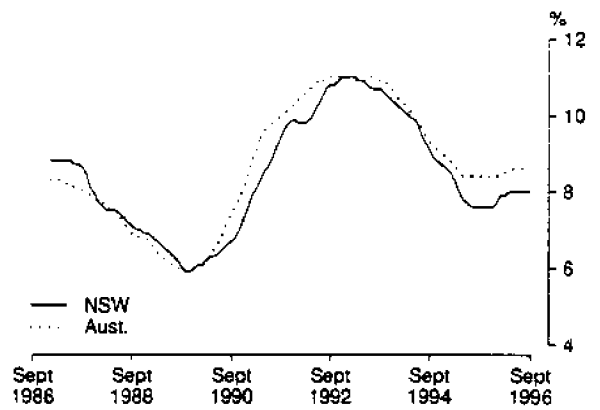
NEW SOUTH WALES IN RELATION TO OTHER STATES AND AUSTRALIA

Indicator	Latest period	NSW	Vic.	Qld	SA	WA	Tas.	Aust.
		%	%	%	%	%	%	%
Unemployment rate (seasonally adjusted)	Sept. 96	8.1	9.4	9.4	9.8	7.5	10.7	8.7
Percentage change from previous year—								
Employed persons	Sept. 96	0.1	1.5	2.3	0.2	2.0	-0.5	1.1
Consumer price index: all groups	Sept. qtr 96	2.5	1.7	2.3	1.7	2.3	2.3	2.1
Average weekly employee earnings: full-time adult ordinary time (trend estimates)	May qtr 96	3.9	3.9	2.4	3.2	6.4	4.4	3.8
Retail turnover (trend estimates)	Aug. 96	7.8	3.9	4.9	1.9	2.8	4.8	5.2
New motor vehicle registrations	Aug. 96	-3.4	-5.8	19.5	-9.9	6.2	5.3	0.4
Dwelling units approved	Aug. 96	-10.6	16.2	-0.9	-18.5	-22.4	-20.6	-3.6
Value of non-residential building approved	Aug. 96	-0.2	10.1	-32.0	93.2	150.9	-26.5	1.5
Value of all buildings approved	Aug. 96	-2.9	19.9	-15.3	22.6	32.3	-19.1	1.5
Value of engineering construction work done	June qtr 96	2.1	-5.8	2.3	11.5	79.2	0.6	10.4
Room occupancy rate in licensed hotels and motels etc.	June qtr 96	1.4	4.7	-3.7	2.8	-1.6	-3.5	0.0
Actual private new capital expenditure	June qtr 96	18.0	18.8	13.8	3.7	23.3	-27.0	18.5

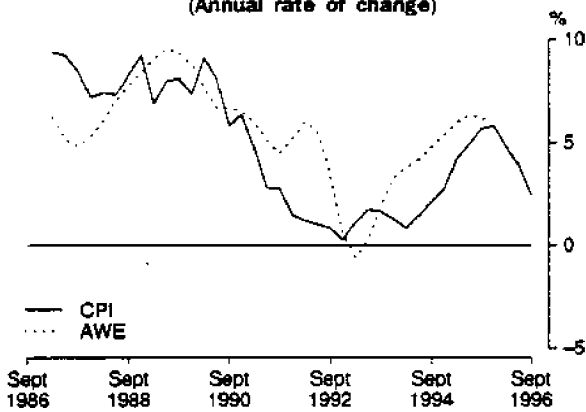
MONTHLY CHANGE IN NUMBER OF PERSONS EMPLOYED (Trend)



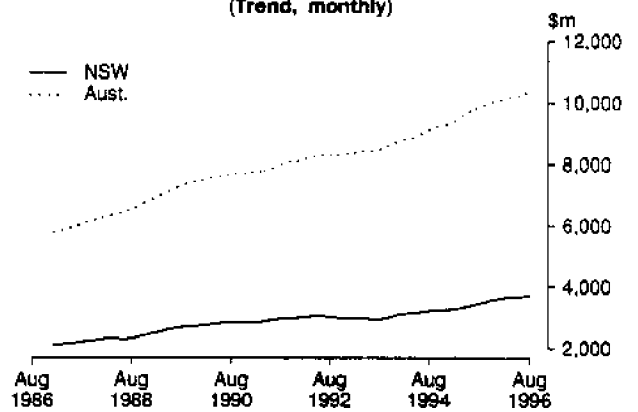
UNEMPLOYMENT RATE (Trend)



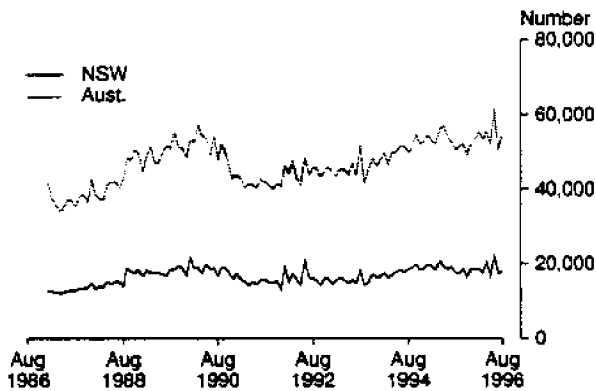
PRICES AND EARNINGS, NSW (Annual rate of change)



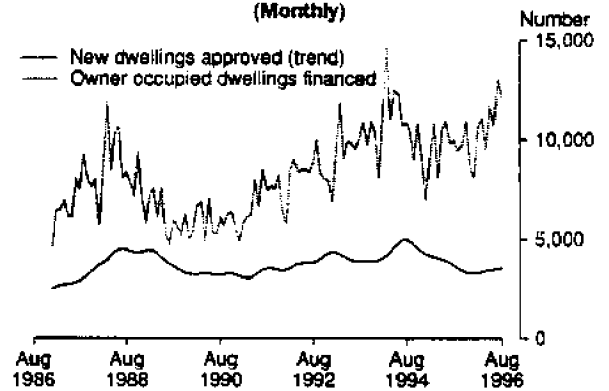
RETAIL TURNOVER (Trend, monthly)



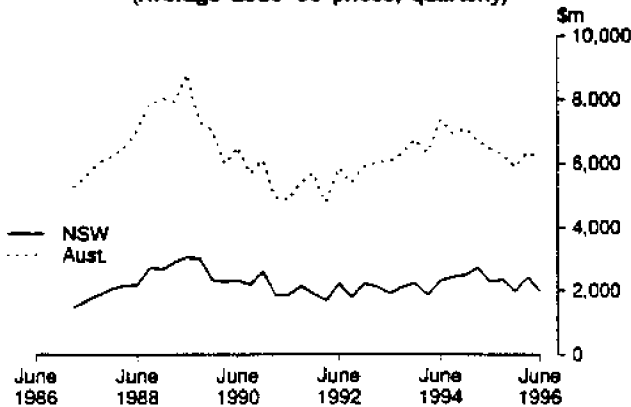
NEW MOTOR VEHICLES REGISTERED (Monthly)



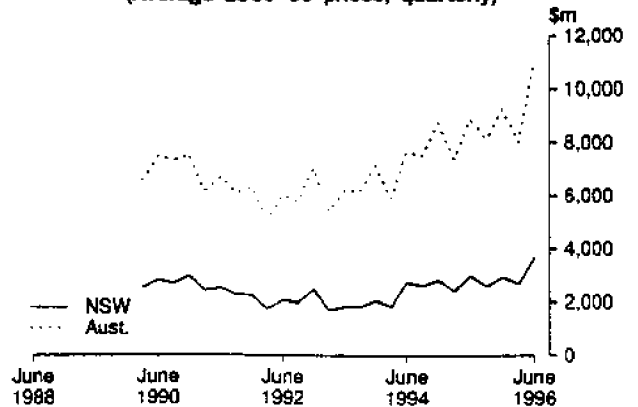
NEW DWELLINGS APPROVED AND HOUSING FINANCE COMMITMENTS, NSW (Monthly)



VALUE OF ALL BUILDINGS COMMENCED (Average 1989-90 prices, quarterly)



PRIVATE NEW CAPITAL EXPENDITURE (Average 1989-90 prices, quarterly)



Indicator	Unit	Latest period	New South Wales		Australia			
			Latest figure	Change from prior period %	Change from same period prior year %	Latest figure	Change from prior period %	Change from same period prior year %
Population								
Estimated resident population	'000	Mar. qtr 96	6 173	0.34	1.29	18 239	0.39	1.36
Civilian population aged 15 years and over	'000	Sept. 96	4 885	0.15	1.55	14 405	0.15	1.64
Labour Force								
Employed persons—full-time (original series)	'000	Sept. 96	2 148	1.2	-0.6	6 300	1.0	0.3
—total (original series)	'000	Sept. 96	2 814	1.2	0.1	8 430	1.3	1.1
—total (seasonally adjusted)	'000	Sept. 96	2 791	-0.3	0.1	8 347	-0.4	1.0
Unemployed persons—(original series)	'000	Sept. 96	249	4.6	8.2	800	3.8	4.8
—(seasonally adjusted)	'000	Sept. 96	247	-0.3	8.3	799	-1.0	4.8
Labour force (seasonally adjusted)	'000	Sept. 96	3 038	-0.3	0.7	9 146	-0.5	1.4
Participation rate (seasonally adjusted)	%	Sept. 96	62.2	-0.4	-0.8	63.5	-0.6	-0.3
Unemployment rate (seasonally adjusted)	%	Sept. 96	8.1	0.0	7.5	8.7	-0.5	3.4
Job vacancies	'000	Aug. qtr 96	25	2.9	-21.3	64	18.5	2.4
Weekly paid overtime per employee (a)	hours	Aug. qtr 96	6.8	-10.4	-2.2	6.8	-7.0	-0.5
Average Weekly Employee Earnings								
Full-time adult ordinary time earnings (trend estimates)	\$	May 96	700.20	0.7	3.9	670.70	0.8	3.8
All employees total earnings (trend estimates)	\$	May 96	600.00	1.3	4.6	564.60	0.9	3.0
Industrial Disputes—Working days lost								
Consumer Price Index, All Groups 1989-90 = 100	'000	July 96	48.1	-5.3	1 512.5	137.3	3.0	276.7
Retail Turnover (trend estimates)	\$m	Aug. 96	3 745	0.6	7.8	10 365	0.5	5.2
New Motor Vehicle Registrations (seasonally adjusted)	No.	Aug. 96	17 920	2.4	1.4	54 191	7.0	6.5
Passenger vehicles (seasonally adjusted)	No.	Aug. 96	15 180	1.7	1.7	44 687	4.7	5.3
Other motor vehicles (excl. motor cycles) (seas. adj.)	No.	Aug. 96	2 740	6.0	0.1	9 503	18.8	12.8
Production								
Clay bricks (seasonally adjusted) (b)	million	Aug. 96	53 264	13.0	0.9	118	-1.8	-6.0
Electricity (seasonally adjusted)	million kWh	Aug. 96	5 080	-3.2	1.1	13 548	-4.0	0.0
Gas (seasonally adjusted) (b)	terajoules	Aug. 96	8 999	-2.5	4.5	52 152	-2.2	5.4
Overseas Trade								
Imports	\$m	Aug. 96	3 002	2.0	-2.3	6 753	-1.2	-1.2
Exports, Australian produce	\$m	Aug. 96	1 334	-9.4	-11.3	6 075	-1.5	4.2
Tourism								
Overseas visitor short-term arrivals	'000	July 96	145	16.5	-2.8	358	16.7	8.6
Resident overseas short-term departures	'000	July 96	92	-16.3	-2.4	237	-9.5	1.4
Licensed hotels, motels etc. with facilities—								
Guest nights	'000	June qtr 96	5 200.3	-8.2	3.2	15 050.4	-6.5	3.2
Room occupancy rate	%	June qtr 96	57.4	-6.1	1.4	56.1	-4.9	0.0
Building								
Approvals—								
Dwelling units (seasonally adjusted)	No.	Aug. 96	3 418	-18.0	-5.6	10 791	1.6	2.2
Value of new residential building (seasonally adj.)	\$m	Aug. 96	372	-7.9	-2.5	1 093	5.7	8.1
Value of non-residential building	\$m	Aug. 96	480	66.1	-0.2	1 133	29.7	1.5
Value of all building	\$m	Aug. 96	929	9.2	-2.9	2 449	8.4	1.5
Commencements—								
New dwelling units	No.	June qtr 96	9 883	-0.2	-18.8	29 969	5.4	-17.1
Value of new residential buildings (c)	\$m	June qtr 96	991	-11.1	-17.7	2 907	2.4	-13.4
Value of non-residential building (c)	\$m	June qtr 96	770	-30.6	-8.4	2 640	-13.9	2.7
Value of all building (c)	\$m	June qtr 96	1 991	-18.2	-12.8	6 115	-4.0	-5.7
Value of work done in period (c)	\$m	June qtr 96	2 269	8.3	-10.4	6 256	8.8	-9.5
Engineering Construction								
Private contractors—								
Value of work commenced	\$m	June qtr 96	368	-27.8	-13.7	1 855	-43.2	16.8
Value of work done	\$m	June qtr 96	581	8.8	0.8	2 197	18.1	28.8
Value of work yet to be done	\$m	June qtr 96	813	-17.2	-42.4	4 760	-5.6	30.9
Value of work done by public sector	\$m	June qtr 96	855	24.3	3.0	1 918	22.1	-5.1
Finance								
Housing finance for owner occupation—secured commitments to individuals by significant lenders								
Personal finance commitments—significant lenders	\$m	Aug. 96	1 727	-5.5	22.2	4 390	-3.2	8.4
Commercial finance commitments—significant lenders	\$m	Aug. 96	1 022	-20.7	10.3	2 790	-13.5	-0.3
Savings balances at end of month—								
All banks (d) (Source: Reserve Bank)	\$m	Aug. 96	131 203	-0.3	(e)	289 849	0.0	10.4
Building societies	\$m	July 96	3 893	2.1	13.1	12 035	1.2	11.4
Credit unions	\$m	July 96	6 018	0.3	9.4	13 755	0.9	10.2
Actual New Fixed Capital Expenditure (f)								
New buildings and structures	\$m	June qtr 96	3 761	34.6	18.0	11 129	33.4	18.5
Equipment, plant and machinery	\$m	June qtr 96	923	42.9	82.2	3 373	52.7	47.5
Equipment, plant and machinery	\$m	June qtr 96	2 838	32.1	5.9	7 756	26.5	9.2

(a) Average weekly overtime hours for those employees who were paid for overtime. (b) Includes Australian Capital Territory. (c) Average of 1989-90 prices. (d) Average of weekly deposit balances. (e) Not available due to revisions only being done nationally. (f) By private enterprises



2130710010964